

Study on Hourly Frequency of Behavioral Manifestations in Dogs Kept in a Specialized Shelter

Elena POPESCU-MICLOȘANU¹⁾, Carmena ȘERBĂNOIU²⁾

¹⁾University of Agronomical Sciences and Veterinary Medicine Bucharest, Faculty of Animal Science,
59 Mărăști Bd., 011464 Bucharest, Romania; elenapopescu50@yahoo.com

²⁾Pro Animals, Animal Protection Association, Târgu Jiu, Gorj, Romania; proanimals@xnet.ro

Keywords: dogs, shelter, type of behavior, one-hour time interval

SUMMARY

In a study conducted in the shelter for stray dogs of Pro Animals Association of Târgu Jiu was monitored hourly the number of the behavioral manifestations. For it was studied the behavior of 15 dogs housed in three paddocks for 10 days, 10 hours a day. From research, result that the highest share during the morning held the rest and abnormal behavior and activity behavior had the highest share during the afternoon.

Data obtained by studying the behavior of 15 dogs of 3 paddocks, 10 hours a day during 10 days, were processed using Microsoft Excel 2003 and the significance of differences between the averages of three groups of behavior was tested with Student test.

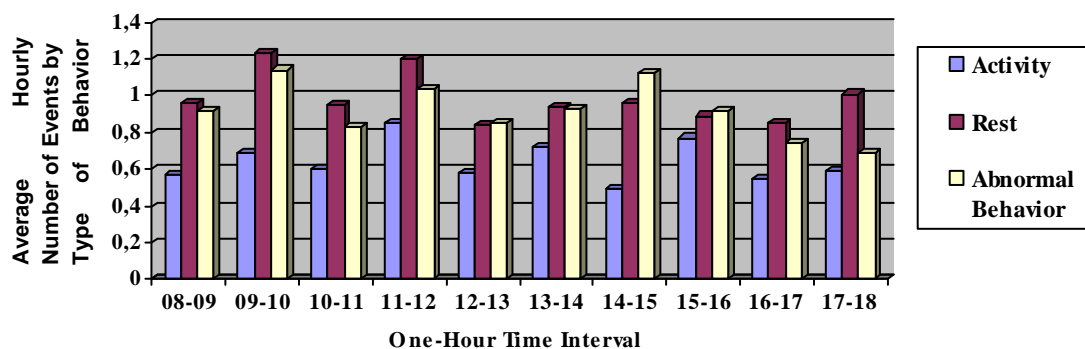


Fig. 1. Average hourly number of events by type of behavior in the 08-18 time intervals, for each dog in the analyzed period

The higher frequency of behavioral activity was recorded between the hours 15.00-16.00 (afternoon), while the rest behavior had the highest share in the schedule 09.00-10.00 (morning). Abnormal behavior had a higher frequency in the hours 09.00-10.00 and 11.00-12.00 (morning).

REFERENCES

1. Popescu-Micloșanu, Elena, Șerbănoiu Carmena (2009). Study related to several aspects of shelter dogs characteristics and behavior. The 38th International Session of Scientific Papers, Faculty of Animal Science, U.S.A.M.V. Bucharest.